

Transboundary Implementation Process: Engaging Communities and Collaboration between local-level institutions

Efforts/Process

- Joint preparation and implementation of SCMPs
- Joint Preparation of Investment projects – Identification ,FS /ESIA and RAPs (Involvement of WRUA's)
- Enhancement of collaboration between local communities across the border and strengthen cooperation.

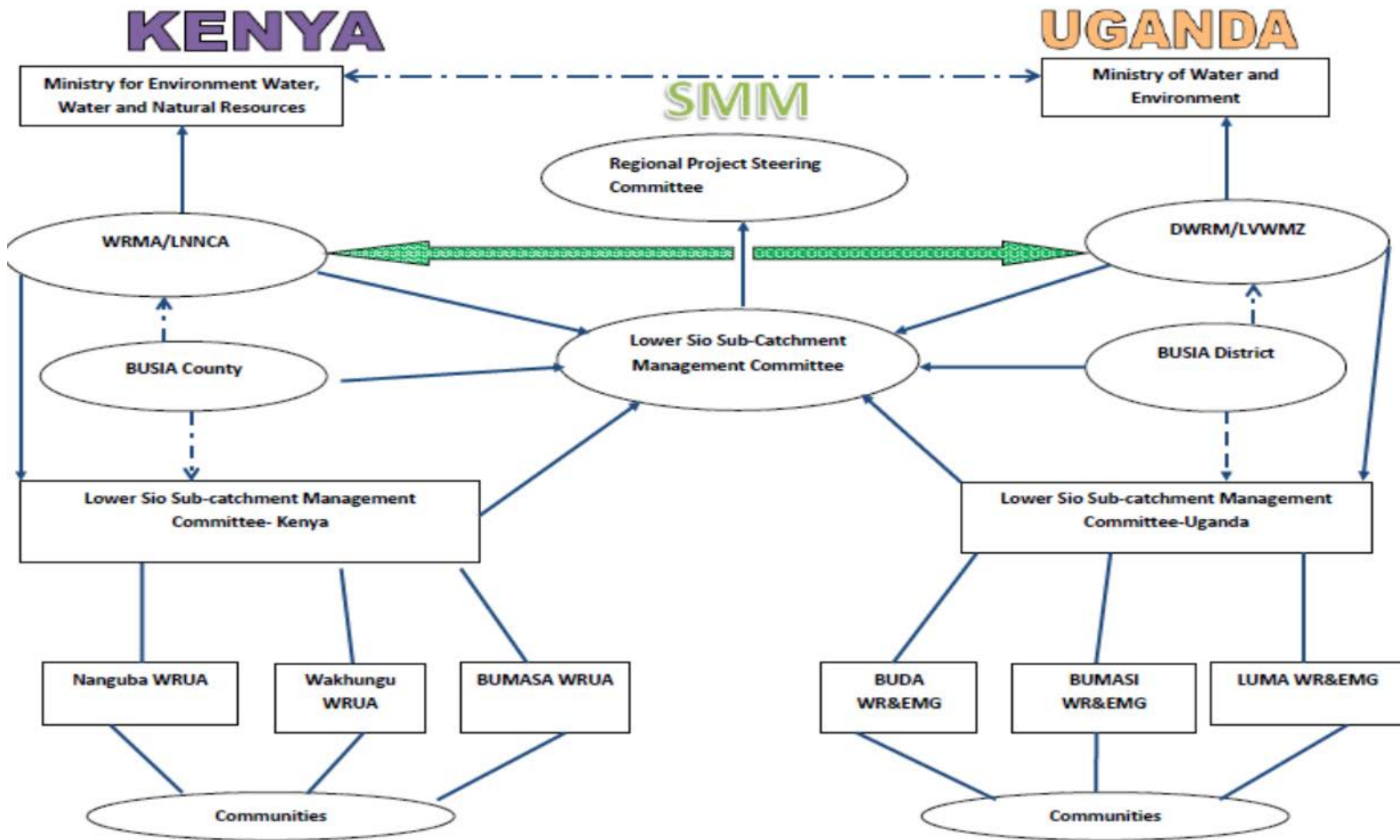
Preparation of Transboundary Middle Malaba sub-catchment Management Plan (Role of Communities and Local level Institutions)

UGANDA	KENYA
Ministry of Water and Environment	Ministry of Water and Sanitation
Directorate of Water Resource Management	Water Resources Authority
Lake Kyoga Water Management Zone -	Lake Victoria North Catchment Area
Mpologoma Catchment Management Organization/committee	Elgon-Cherenganyi Catchment Area – Kitale sub regional Office
Osukuru, Mella and Kwapa Water and Environmental Management groups	Komiriai and Adungosi WRUA's

Implementation of Transboundary Lower Sio sub-catchment Management Plan (Role of Communities and Local level Institutions)

UGANDA	KENYA
Ministry of Water and Environment	Ministry of Water and Sanitation
Directorate of Water Recourses Management	Water Resources Authority
Victoria Water Management Zone	Lake Victoria North Catchment Area
Sio Catchment Management Organization/Commitee	Lower Nzoia /Yala Catchment Area- Siaya Sub-Regional Office
Buda, Bumasi, and Luma Water Resources and Environment Groups	Wakhungu ,Nanguba and Bumasa WRUA's

SMM INSTITUTIONAL FRAMEWORK



Effective Engagement of Communities and local-level institutions

- Critical transboundary issues (Water pollution, soil erosion, etc can only be addressed adequately through involvement of local communities
- Operationalization of the Institutional arrangements through Joint Implementation of the SCMPs
- Need for continuous capacity building to local communities and technical officers for local agencies with skills essential for integrated water resources management.
- Transboundary operations at the local level will require commensurate efforts nationally to have impact.